



TE PUKE PRIMARY SCHOOL

STRATEGIC PLAN
PLAN 2026—2028

Growing Together

IDENTITY • CULTURE • GROWTH

OUR VISION & MISSION



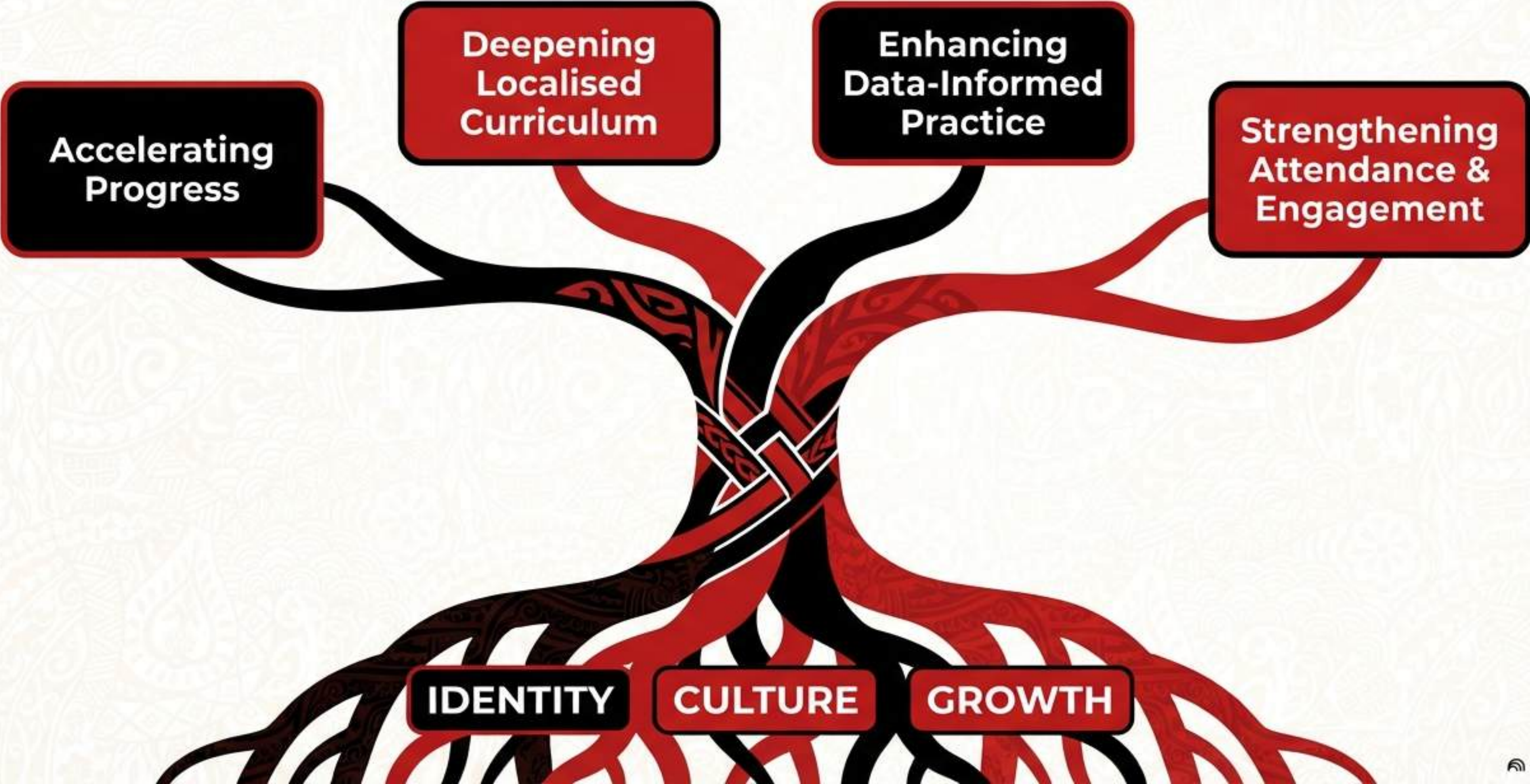
IDENTITY (Ahurea)

CULTURE (Tikanga)

GROWTH (Whakatipu)

Mission Statement: Consistently create a culture of whānau, showing care, love, and support for each and every tamaiti while empowering them to succeed in their learning journey.

STRATEGIC OVERVIEW: THE PATH FORWARD



PRIORITY 1: ACCELERATING PROGRESS

For All Learners

GOAL: Ensure every ākonga experiences success and achieves year-appropriate expectations.

INITIATIVES:

- Early identification system for students at risk.
- Personalised learning plans with clear milestones.
- Targeted intervention programmes for literacy and numeracy.



90%

Learners at/above expectation by 2028

100%

Accelerated progress for students below expectation

STUDENT IMPACT: Regular goal-setting, increased agency, and visible progress tracking.

PRIORITY 2: DEEPENING LOCALISED CURRICULUM

Connection to Place and Tangata Whenua



GOAL: A culturally sustaining curriculum connecting learning to local context.

- INITIATIVES:**
- Partnerships with mana whenua and whānau.
 - Mapping local stories and sites of significance.
 - Expanding reo rua provision.

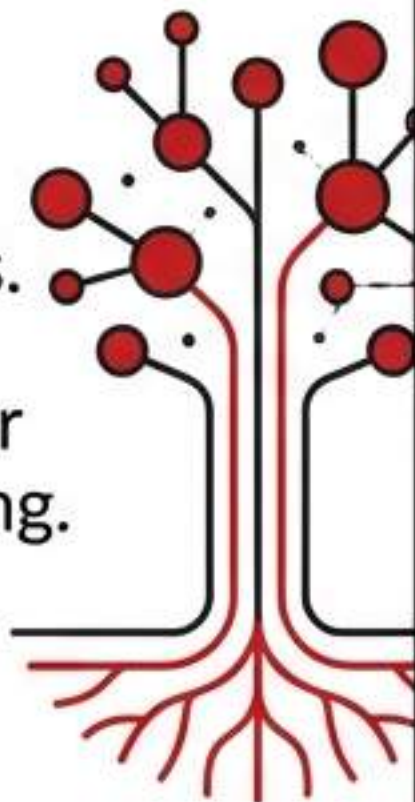
- MEASURES:**
- Documented localised framework.
 - Increased te reo Māori usage.
 - Deepened sense of belonging.

PRIORITY 3: ENHANCING DATA-INFORMED PRACTICE

Robust Systems for Teaching & Learning

INITIATIVES

- School-wide assessment schedule.
- Data-focused team meetings.
- Dashboards for decision-making.



MEASURES



100% Teacher Confidence in using data.



High Whānau Satisfaction with reporting.

TEACHER IMPACT

- Collaborative inquiry.
- Moderation for consistency.
- Evidence-based teaching.



PRIORITY 4: STRENGTHENING ATTENDANCE

A Culture of Belonging & Wellbeing

GOAL:

Ensure regular attendance through belonging and hauora.

STRATEGIES:

- Early response to attendance concerns.
- Positive reinforcement systems.
- Focus on student wellbeing.



Reduced Chronic Absenteeism < 5%

OUR CORE VALUES: THE COMPASS

KAWENGA

Responsibility

KIA MĀIA

Confidence

KAKAMA

Agility/Alertness

AUAHA

Innovation

Aligned with NZ Curriculum Key Competencies to direct learners in all endeavours.

LEARNER PROFILE: TEINA (JUNIOR)

Foundations of Connection



- **RELATIONSHIPS:** Making friends, being gentle and kind.
- **IDENTITY:** Drawing pictures and telling stories about family.
- **RESILIENCE:** Not giving up when things are hard.
- **ENGAGEMENT:** Trying new things and sharing ideas.
- **PLACE:** Knowing special places and stories.

LEARNER PROFILE: TAKAWAENGA (MIDDLE)

Developing Agency



- » **RELATIONSHIPS:** Showing empathy, respect, and belonging.
- » **IDENTITY:** Celebrating backgrounds and family cultures.
- » **RESILIENCE:** Facing challenges with confidence.
- » **MANAGEMENT:** Setting goals and taking charge of learning.
- » **PLACE:** Knowing local history and special places.

LEARNER PROFILE: TUAKANA (SENIOR)

Leadership & Citizenship



- **RELATIONSHIPS:** Embracing diversity and belonging.
- **IDENTITY:** Pride in culture; knowledge of tupuna and pūrakau.
- **LEADERSHIP:** Acting as a role model and mentor to others.
- **INNOVATION:** Creative thinking and problem-solving.
- **RESILIENCE:** Perseverance and self-confidence.

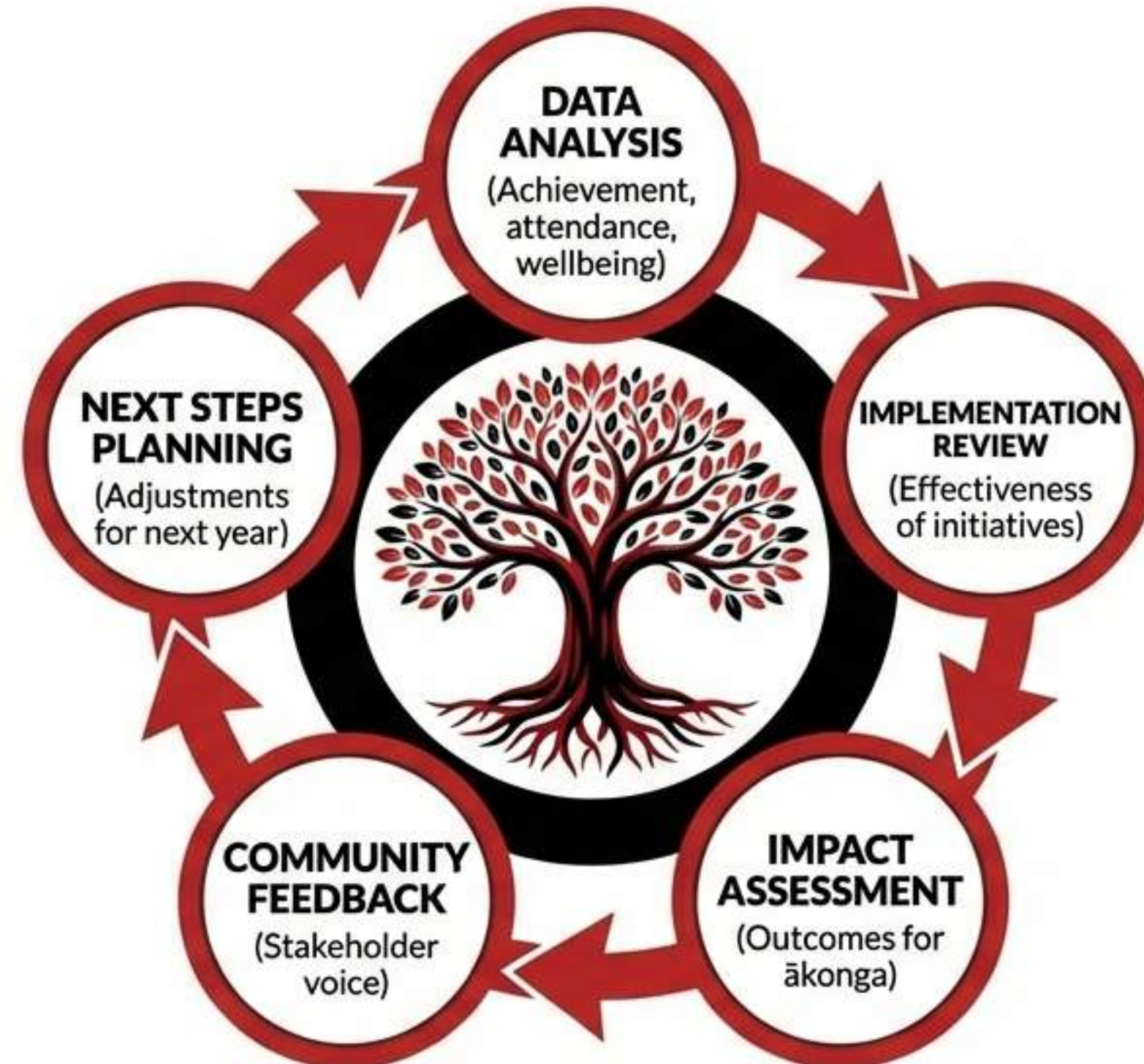
NURTURING THE TREE: IMPLEMENTATION



- » **Board:** Governance & Strategy
- » **SLT:** Leading Capability
- » **Staff:** Implementing & Analysing
- » **Students:** Active Participation
- » **Whānau:** Engagement & Support
- » **Iwi:** Cultural Guidance

CONTINUOUS IMPROVEMENT CYCLE

Annual Review Process



A COMMITMENT TO GROWTH



We are committed to accelerating academic progress, embedding a rich **cultural identity**, and fostering a sense of belonging for every child. Together, we create a culture of whānau—showing care, love, and support for each and every tamaiti.

IDENTITY • CULTURE • GROWTH